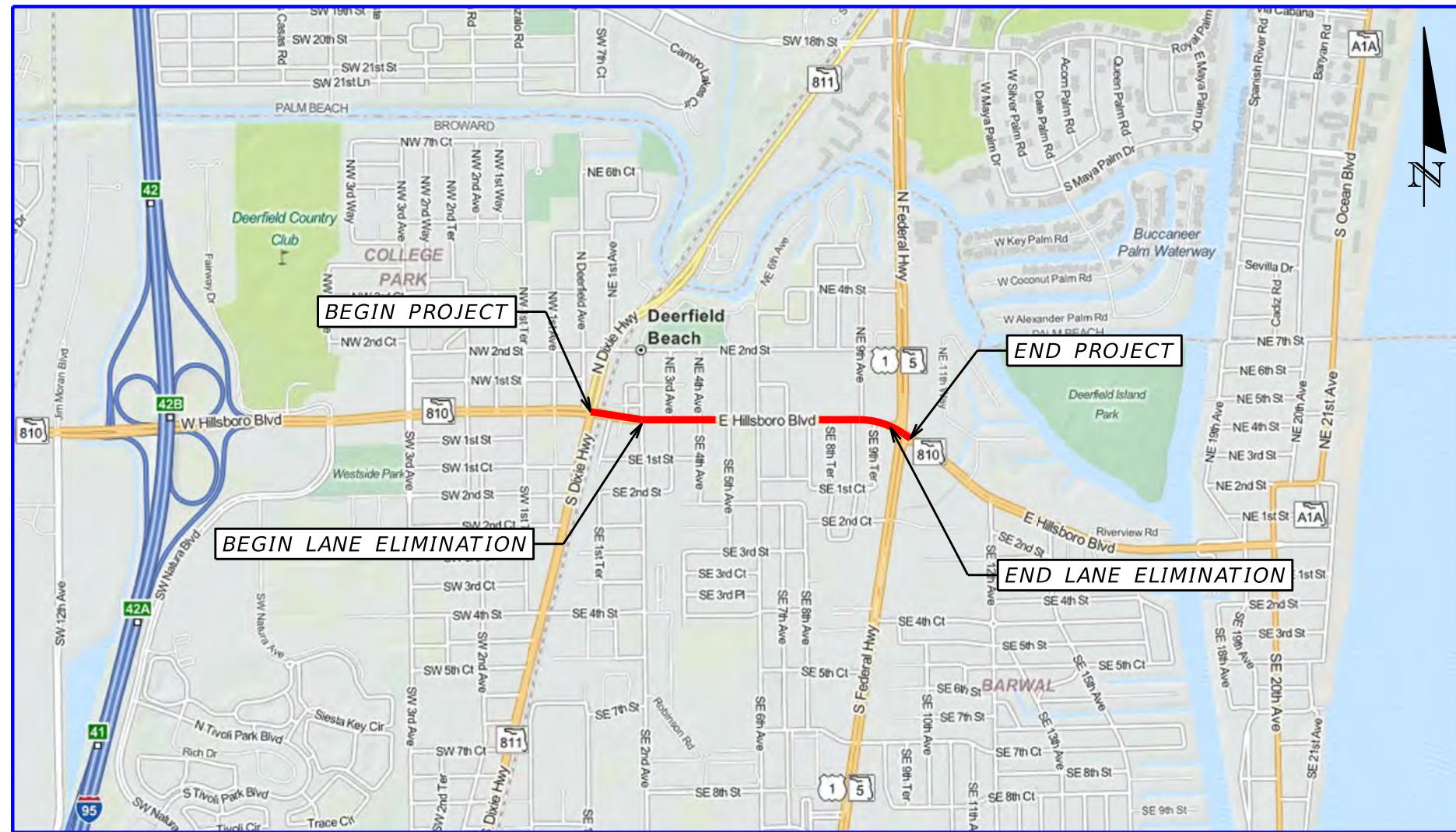


# DRAFT CONCEPT PLANS

## HILLSBORO BLVD. (SR 810) LANE ELIMINATION

### From Dixie Hwy (SR 811) To Federal Hwy (US 1)

 **Stantec**  
 21301 Powerline Rd,  
 Suite 311  
 Boca Raton, FL 33433  
 tel. 561.487.3379

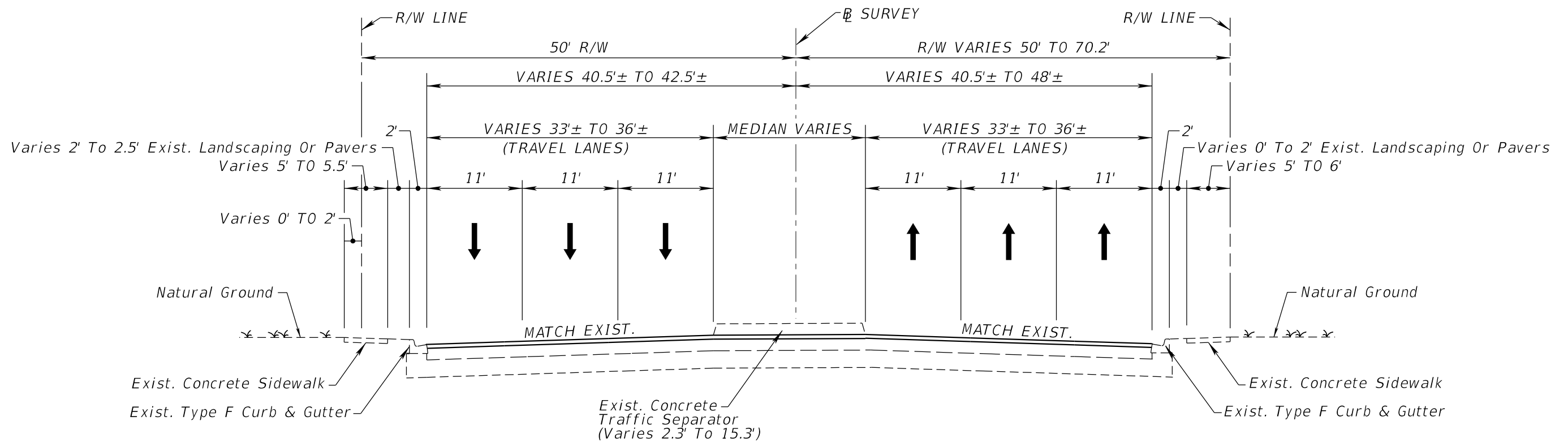


**LOCATION MAP**

INDEX OF SHEETS	
SHT. NO.	DESCRIPTION
1	COVER
2-3	TYPICAL SECTIONS
4-10	CONCEPT PLANS

**JULY 2014**

SHEET NO.
1



**TYPICAL SECTION  
HILLSBORO BLVD (SR 810)  
FROM S DIXIE HWY (SR 811) TO NE/SE 2ND AVE**

**TRAFFIC DATA**

CURRENT YEAR = 2014 AADT = 31,000  
 ESTIMATED OPENING YEAR = 2017 AADT = 31,500  
 ESTIMATED DESIGN YEAR = 2040 AADT = 35,300  
 K = 9.0% D = 53.6% T = 4.0% (24 HOUR)  
 DESIGN HOUR T = 2.0%  
 DESIGN SPEED = 40 MPH

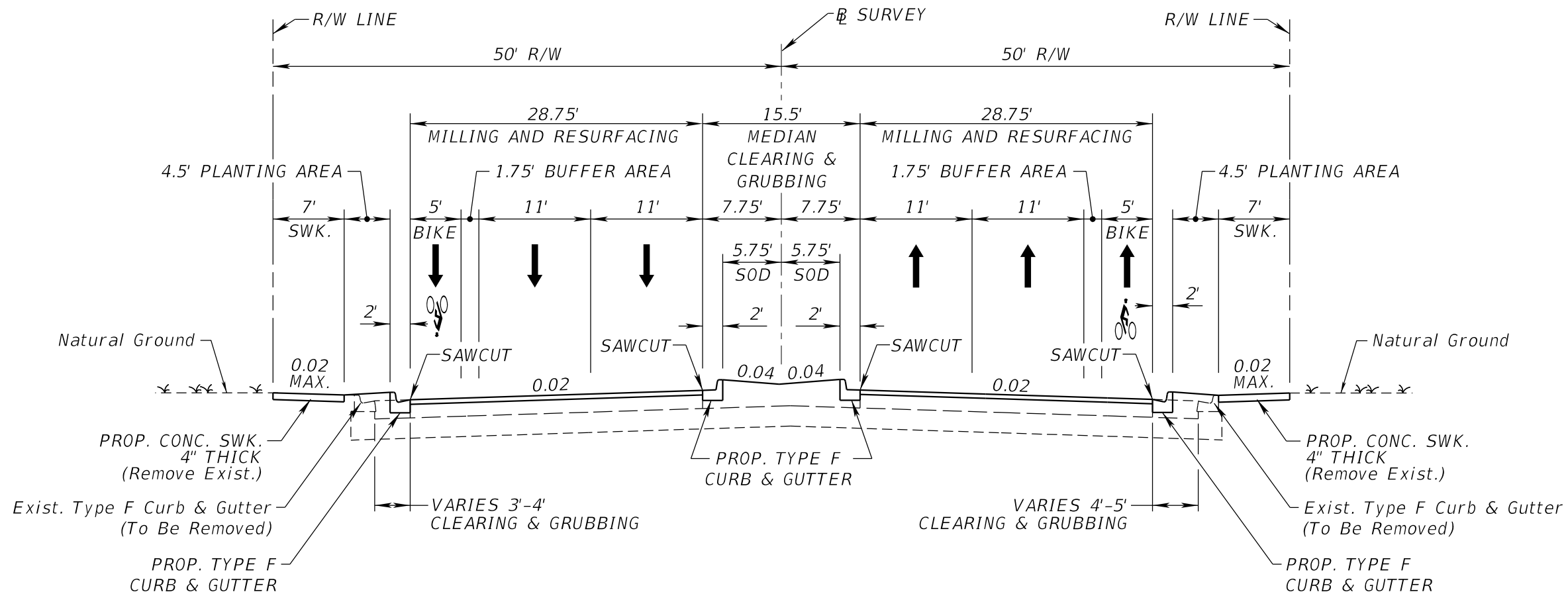


CITY OF DEERFIELD BEACH		
ROAD NO.	COUNTY	FINANCIAL PROJECT ID
SR 810	BROWARD	N/A

**HILLSBORO BLVD (SR 810) LANE ELIMINATION  
FROM DIXIE HWY (SR 811) TO FEDERAL HWY (US 1)  
EXISTING TYPICAL SECTION**

SHEET NO.

2



**TYPICAL SECTION  
HILLSBORO BLVD (SR 810)  
FROM NE/SE 2ND AVE TO FEDERAL HWY (US 1)**

**TRAFFIC DATA**

CURRENT YEAR = 2014 AADT = 31,000  
 ESTIMATED OPENING YEAR = 2017 AADT = 31,500  
 ESTIMATED DESIGN YEAR = 2040 AADT = 35,300  
 K = 9.0% D = 53.6% T = 4.0% (24 HOUR)  
 DESIGN HOUR T = 2.0%  
 DESIGN SPEED = 40 MPH

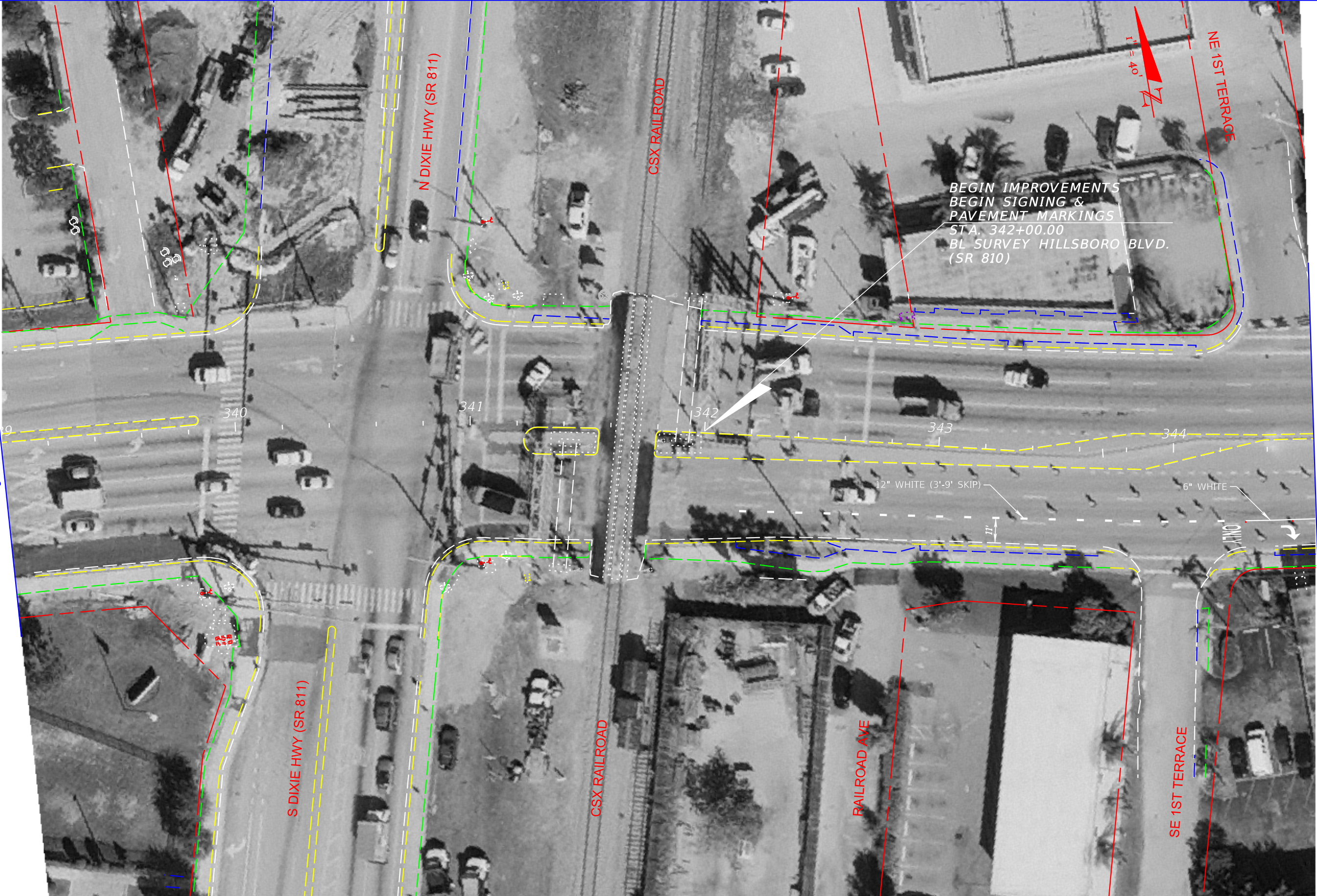


CITY OF DEERFIELD BEACH		
ROAD NO.	COUNTY	FINANCIAL PROJECT ID
SR 810	BROWARD	N/A

**HILLSBORO BLVD (SR 810) LANE ELIMINATION  
FROM DIXIE HWY (SR 811) TO FEDERAL HWY (US 1)  
PROPOSED TYPICAL SECTION**

SHEET NO.  
**3**





BEGIN IMPROVEMENTS  
 BEGIN SIGNING &  
 PAVEMENT MARKINGS  
 STA. 342+00.00  
 BL SURVEY HILLSBORO BLVD.  
 (SR 810)

339+00.00

344+60.00

LEGEND		Milling & Resurfacing		Prop. Landscaping		Exist. Front Of Sidewalk	
		Prop. Median			Removal of Existing Concrete (Widening)		Exist. Curb
		Prop. 4" Conc.			Exist. Back Of Sidewalk		Exist. R/W Line
		Prop. 6" Conc.			Exist. Edge Of Pavt.		

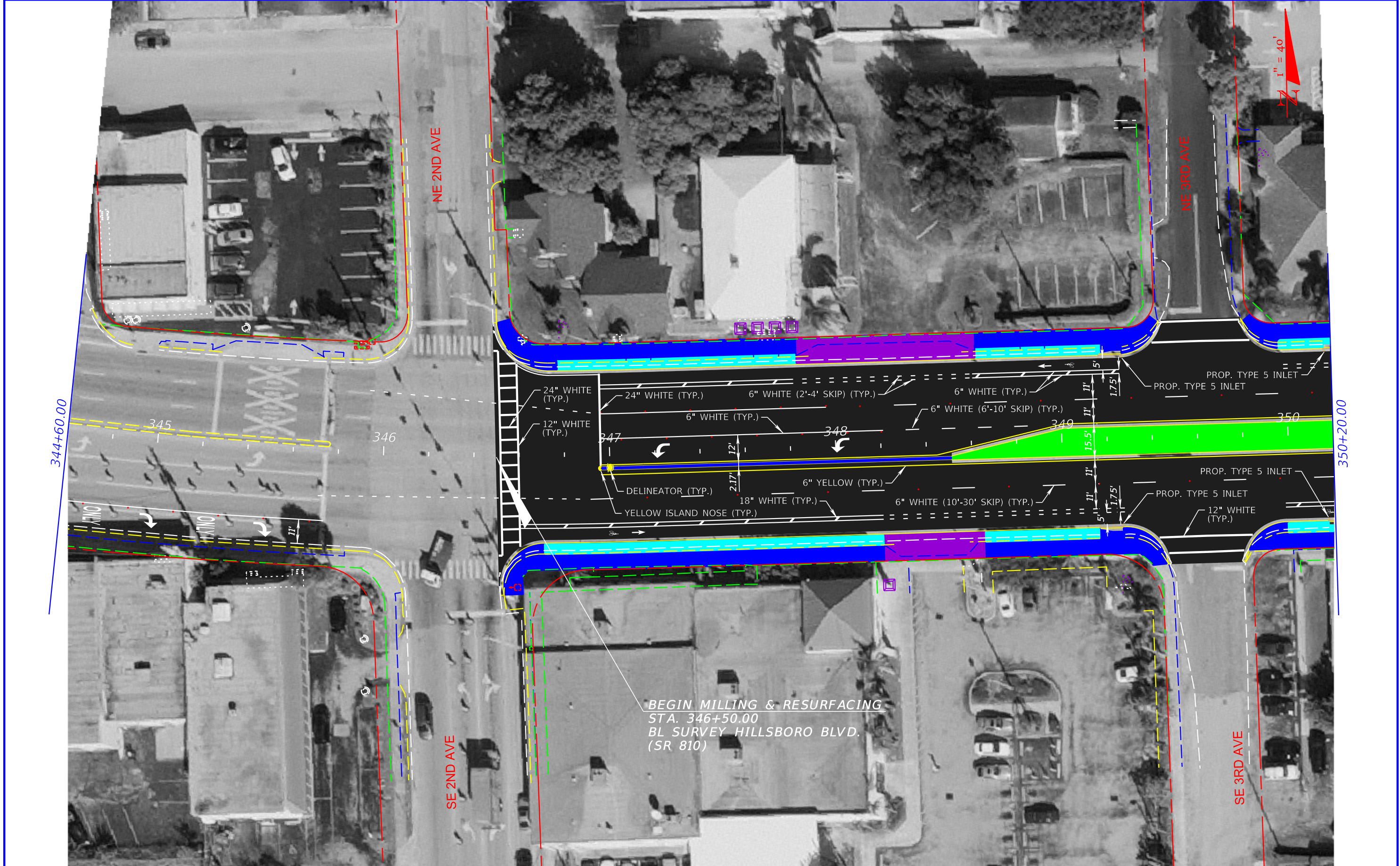
**Stantec**  
 21301 Powerline Rd,  
 Suite 311  
 Boca Raton, FL 33433  
 tel. 561.487.3379

CITY OF DEERFIELD BEACH		
ROAD NO.	COUNTY	FINANCIAL PROJECT ID
SR 810	BROWARD	N/A

*HILLSBORO BLVD (SR 810) LANE ELIMINATION*  
*FROM DIXIE HWY (SR 811) TO FEDERAL HWY (US 1)*  
**CONCEPT PLANS**

SHEET NO.
4





BEGIN MILLING & RESURFACING  
 STA. 346+50.00  
 BL SURVEY HILLSBORO BLVD.  
 (SR 810)

<b>LEGEND</b>		Milling & Resurfacing		Exist. Front Of Sidewalk
		Prop. Median		Removal of Existing Concrete (Widening)
		Prop. 4" Conc.		Exist. Back Of Sidewalk
		Prop. 6" Conc.		Exist. Edge Of Pavt.
		Prop. Landscaping		Exist. R/W Line

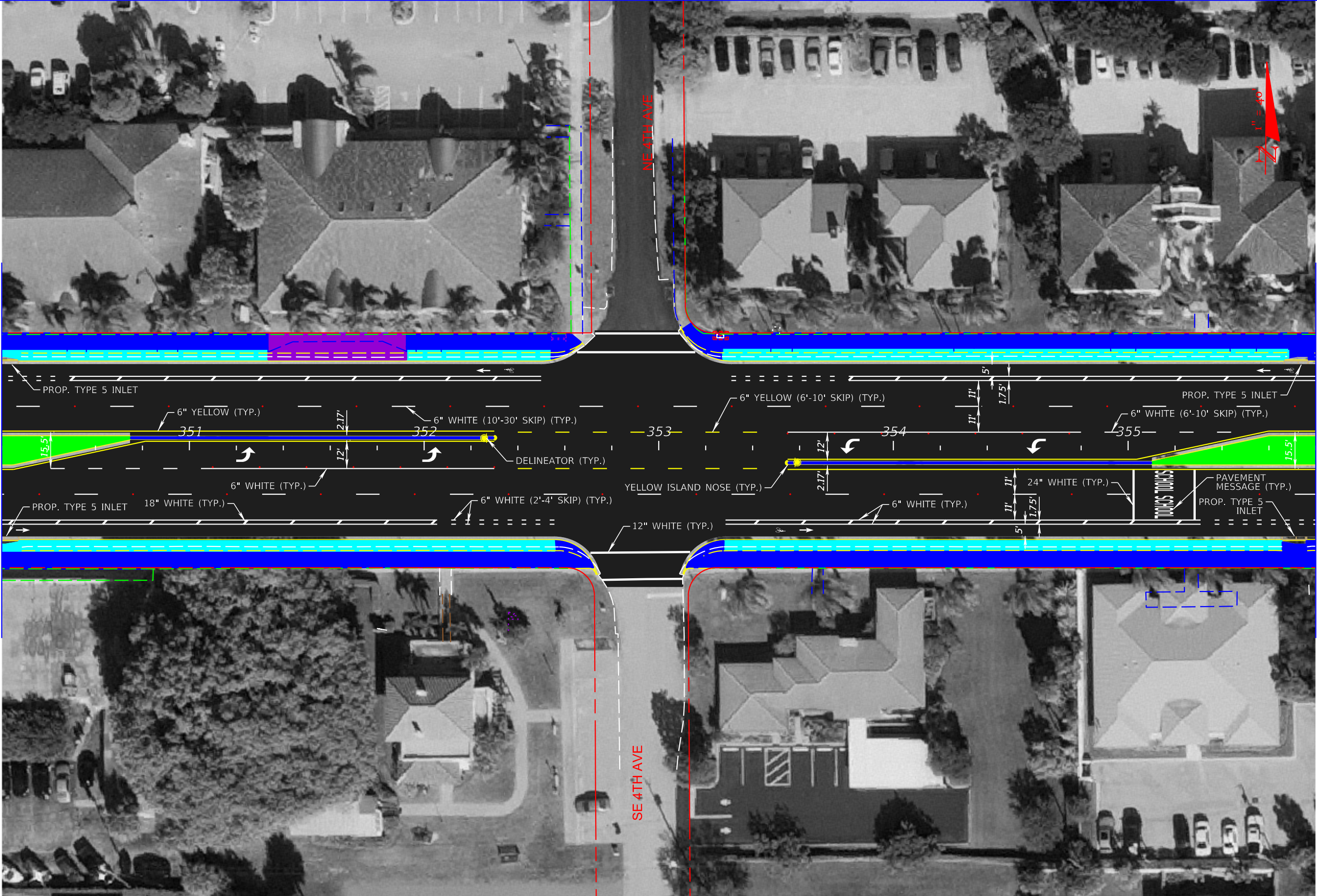
**Stantec**  
 21301 Powerline Rd,  
 Suite 311  
 Boca Raton, FL 33433  
 tel. 561.487.3379

CITY OF DEERFIELD BEACH		
ROAD NO.	COUNTY	FINANCIAL PROJECT ID
SR 810	BROWARD	N/A

*HILLSBORO BLVD (SR 810) LANE ELIMINATION*  
*FROM DIXIE HWY (SR 811) TO FEDERAL HWY (US 1)*  
**CONCEPT PLANS**

SHEET NO.
5





<b>LEGEND</b>		Milling & Resurfacing		Exist. Front Of Sidewalk
		Prop. Median		Removal of Existing Concrete (Widening)
		Prop. 4" Conc.		Exist. Back Of Sidewalk
		Prop. 6" Conc.		Exist. Edge Of Pavt.

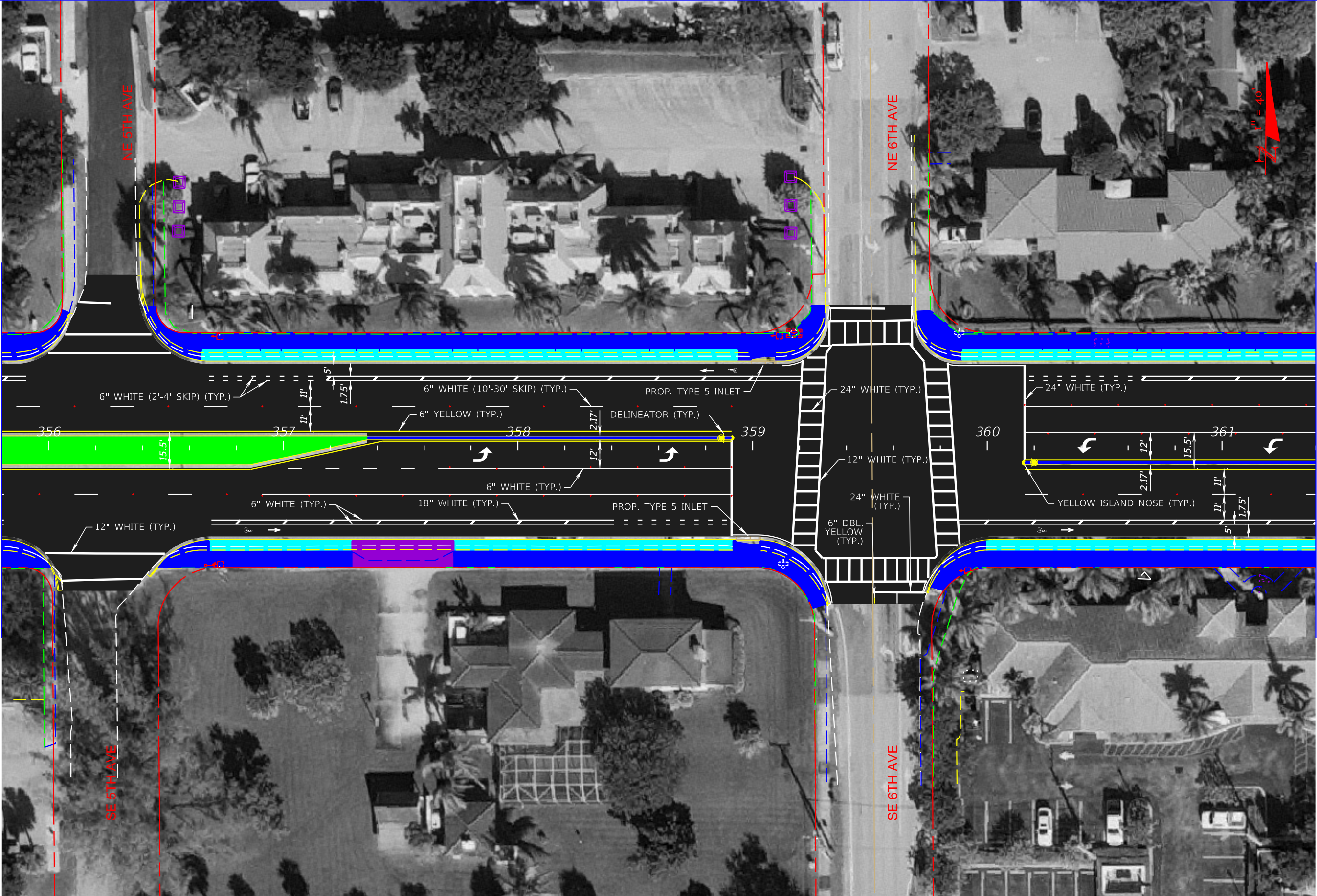
**Stantec**  
 21301 Powerline Rd,  
 Suite 311  
 Boca Raton, FL 33433  
 tel. 561.487.3379

CITY OF DEERFIELD BEACH		
ROAD NO.	COUNTY	FINANCIAL PROJECT ID
SR 810	BROWARD	N/A

*HILLSBORO BLVD (SR 810) LANE ELIMINATION*  
*FROM DIXIE HWY (SR 811) TO FEDERAL HWY (US 1)*  
**CONCEPT PLANS**

SHEET NO.
6





355+80.00

361+40.00



<b>LEGEND</b>	Milling & Resurfacing	Prop. Landscaping	Exist. Front Of Sidewalk
	Prop. Median	Removal of Existing Concrete (Widening)	Exist. Curb
	Prop. 4" Conc.	Exist. Back Of Sidewalk	Exist. R/W Line
	Prop. 6" Conc.	Exist. Edge Of Pavt.	

**Stantec**  
 21301 Powerline Rd,  
 Suite 311  
 Boca Raton, FL 33433  
 tel. 561.487.3379

CITY OF DEERFIELD BEACH		
ROAD NO.	COUNTY	FINANCIAL PROJECT ID
SR 810	BROWARD	N/A

**HILLSBORO BLVD (SR 810) LANE ELIMINATION**  
**FROM DIXIE HWY (SR 811) TO FEDERAL HWY (US 1)**  
**CONCEPT PLANS**

SHEET NO.
7





361+40.00

367+00.00

<b>LEGEND</b>		Milling & Resurfacing		Exist. Front Of Sidewalk
		Prop. Median		Removal of Existing Concrete (Widening)
		Prop. 4" Conc.		Exist. Back Of Sidewalk
		Prop. 6" Conc.		Exist. R/W Line
		Exist. Edge Of Pavt.		

**Stantec**  
 21301 Powerline Rd,  
 Suite 311  
 Boca Raton, FL 33433  
 tel. 561.487.3379

CITY OF DEERFIELD BEACH		
ROAD NO.	COUNTY	FINANCIAL PROJECT ID
SR 810	BROWARD	N/A

*HILLSBORO BLVD (SR 810) LANE ELIMINATION*  
*FROM DIXIE HWY (SR 811) TO FEDERAL HWY (US 1)*  
**CONCEPT PLANS**

SHEET NO.  
8





367+00.00

372+60.00

<b>LEGEND</b>		Milling & Resurfacing		Exist. Front Of Sidewalk
		Prop. Median		Removal of Existing Concrete (Widening)
		Prop. 4\" Conc.		Exist. Back Of Sidewalk
		Prop. 6\" Conc.		Exist. R/W Line
		Exist. Edge Of Pavt.		

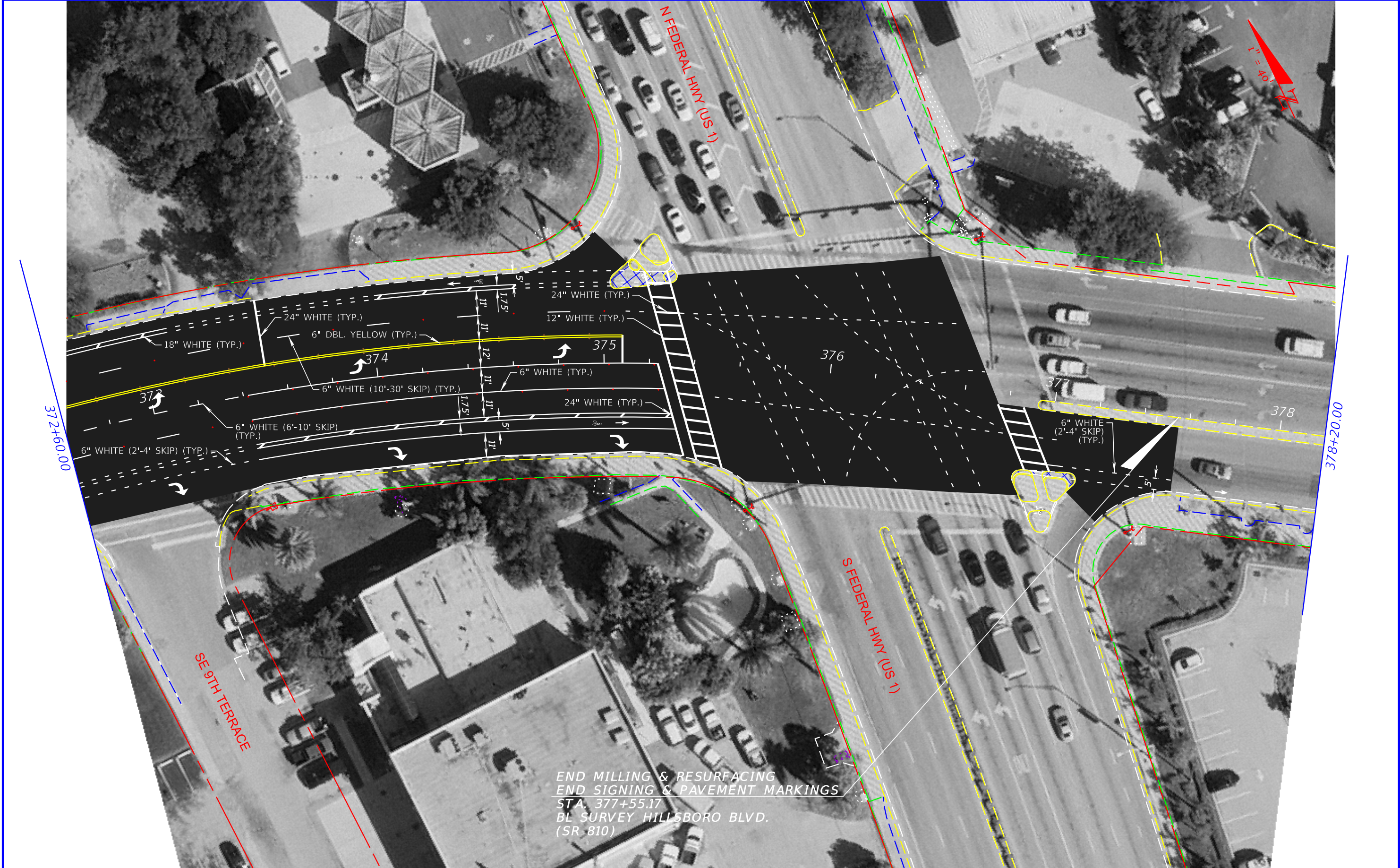
**Stantec**  
 21301 Powerline Rd,  
 Suite 311  
 Boca Raton, FL 33433  
 tel. 561.487.3379

CITY OF DEERFIELD BEACH		
ROAD NO.	COUNTY	FINANCIAL PROJECT ID
SR 810	BROWARD	N/A

**HILLSBORO BLVD (SR 810) LANE ELIMINATION**  
**FROM DIXIE HWY (SR 811) TO FEDERAL HWY (US 1)**  
**CONCEPT PLANS**

SHEET NO.
9





END MILLING & RESURFACING  
 END SIGNING & PAVEMENT MARKINGS  
 STA. 377+55.17  
 BL SURVEY HILLSBORO BLVD.  
 (SR 810)

<b>LEGEND</b>		Milling & Resurfacing		Exist. Front Of Sidewalk
		Prop. Median		Removal of Existing Concrete (Widening)
		Prop. 4\" Conc.		Exist. Curb
		Prop. 6\" Conc.		Exist. R/W Line
		Prop. Landscaping		Exist. Back Of Sidewalk
		Exist. Edge Of Pavt.		

**Stantec**  
 21301 Powerline Rd,  
 Suite 311  
 Boca Raton, FL 33433  
 tel. 561.487.3379

CITY OF DEERFIELD BEACH		
ROAD NO.	COUNTY	FINANCIAL PROJECT ID
SR 810	BROWARD	N/A

**HILLSBORO BLVD (SR 810) LANE ELIMINATION**  
**FROM DIXIE HWY (SR 811) TO FEDERAL HWY (US 1)**  
**CONCEPT PLANS**

SHEET NO.
10